

PART OF N.W. 1/4 OF
SECTION 4, T.5N., R.1W., S.L.B.&M.

IN OGDEN CITY
SCALE 1" = 100'

ALSO SEE PAGES 51-1, 51-2

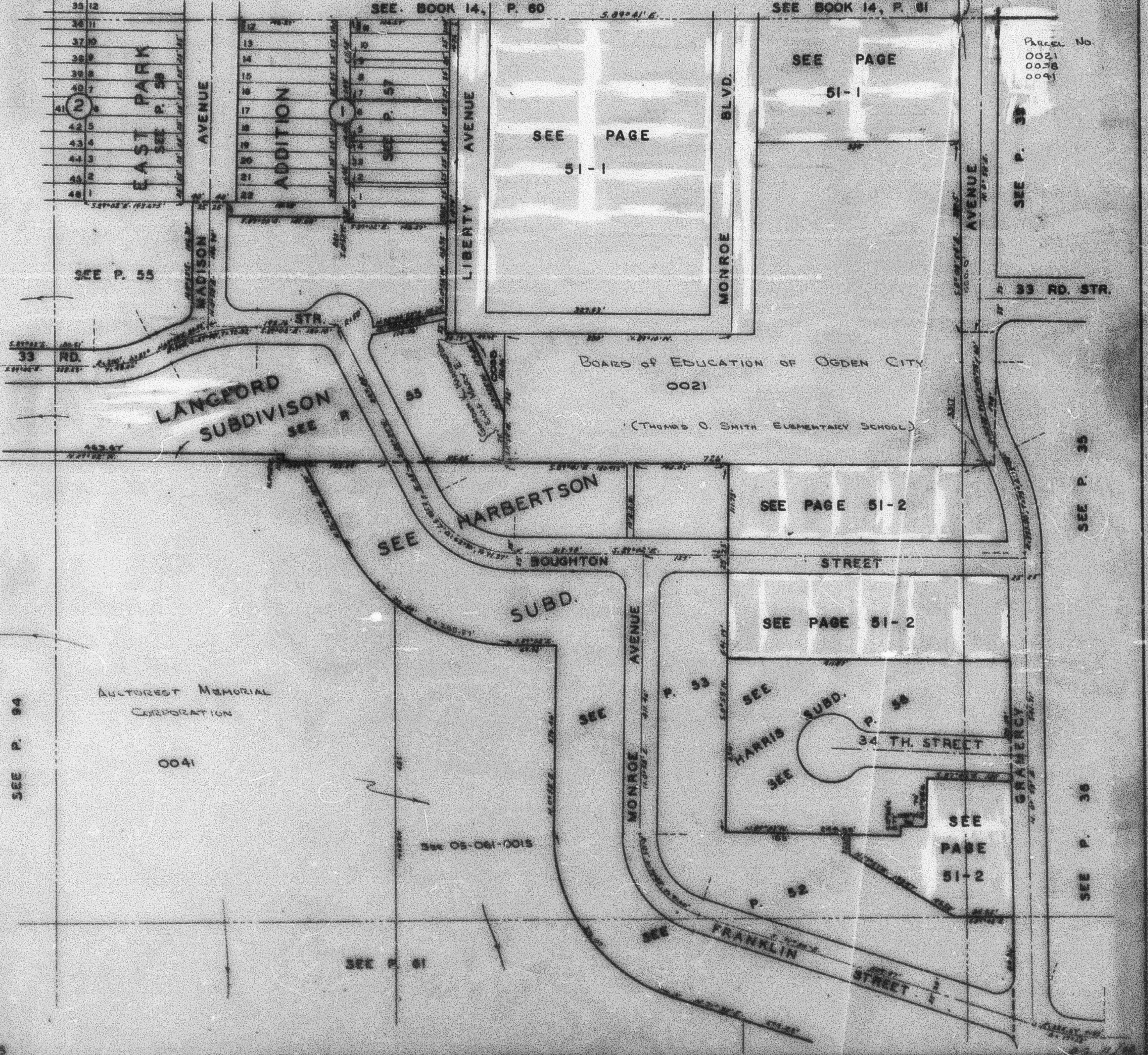
N 1/4 COR. SEC 4

INDEX 05-051

TAXING UNIT: 25

SEE BOOK 14, P. 60

SEE BOOK 14, P. 61



Parcel No.
0021
0038
0091

SEE P. 38

33 RD. STR.

BOARD OF EDUCATION OF OGDEN CITY
0021
(THOMAS O. SMITH ELEMENTARY SCHOOL)

SEE P. 35

SEE P. 36

SEE P. 94

SEE P. 61